

# Training Resources And Consultants

Maximising Human Potential

# Community Benefit Programs

*Unlock your team's potential with a TRAC Consulting Community Benefit Program that will incorporate philanthropy into your organisations professional development initiatives.*



Phone 07 5439 7999  
[www.tracc.com.au](http://www.tracc.com.au)

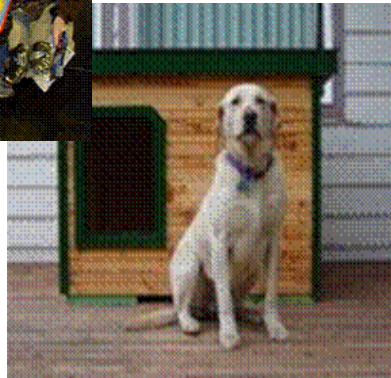
**TRAC Consulting**

QUEENSLAND  
TOURISM  
AWARDS

2006  
**Finalist**

# INDEX:

	<b>Page No.</b>
An Introduction	3
The Great Corporate Race	4 & 5
Bykes for Tykes	6
The Dog House Blues	7
The Corporate Olympics	8
TRAC's Philosophies	9
Investment & Event Costings	10
Client Testimonials	11
Teams Development-Conferencing with a difference!	12



My name is Mark Jones and I would like to introduce our Company TRAC Consulting, and myself, and offer you a number of creative and outstanding programs that fuse together corporate philanthropy and team building. These programs not only benefit your team but they also allow your organisation to contribute back into the community.

My team will customise our programs for your specific needs ... to meet your organisational or conference objectives. We can create a small gathering, such as a retreat or get together, enhance and facilitate an existing community project that your company may already participate in, or even create and tailor a new event for your company's conferencing needs. Programs can be tailored for teams from 8 participants through to 600 delegates.

We provide well-organized and highly professional products. We work with some of the largest and most distinguished companies around the country, and it would be our pleasure and privilege to add your organisation to that list of prominent partners.

We welcome you to visit our website and see for yourself the companies, and our partners, that we work with. Please look through the following information and let me know if you would like to get together and discuss what our company can do for you and the communities that you live in.

Yours for the future ....



Mark Jones  
Principal - TRAC Consulting  
Maximising Human Potential

PO Box 1627, Caloundra Q 4551  
Phone: 07 5439 7999 Fax: 07 5439 7977  
Email: [admin@tracc.com.au](mailto:admin@tracc.com.au) Web: [www.tracc.com.au](http://www.tracc.com.au)

**TRAC Consulting**



## The Great Corporate Race

### What is it?

The Great Corporate Race is the most innovative and leading edge workplace skill, competency development and conferencing tool available on the market.

Similar in structure to its television namesake “The Amazing Race”, the race involves a series of legs and check points where teams are bound by time or resource constraints to achieve the set objectives. Teams compete for outright first position or the achievement of predetermined outcomes or goals.

### How does it work?

1. **Competitive** - Teams compete against each other for individual or team success...or
2. **Collaborative** - Teams compete against time for the overall success of the competing organisations.

Each of the above scenarios has their own set of unique objectives and overall goals.

### Other Important Features

The Races can also be tailored as

1. **Intra-Corporate Races** (teams from the same organisation compete either competitively or collaboratively)
2. **Inter-Corporate Races** (teams from different organisations (i.e. suppliers, franchise stores, clients etc.)

### Benefits

Improved Communication, Effective Decision Making, Problem Solving, Goal Setting, Leadership, Working Effectively in Teams.



## The Great Corporate Race

### Learning Outcomes:

Communication, problem solving, effective decision making, over coming challenges, SUCCESS! The Great Corporate Race offers all of this and more! Having all the hallmark features of your favorite reality game integrated with our own special twists in order to make this an extremely rewarding activity for your organisation. Your participation in The Great Corporate Race directly supports our beneficiary, The Solution Network Australia Foundation. This Foundation assists young girls aged 10-17 who are homeless or at-risk of homelessness through providing crisis accommodation, training, counseling and resource support.

*"Developing your team in the right environment - building Corporate Social Responsibility as an organisational VALUE"*

### Not-for-profit

The Great Corporate Race brand and trademark is owned by The Solution Network Australia Foundation (SNA) a registered Not For Profit organisation. The Foundation has been established to combat the epidemic of youth homelessness that we are facing here in Australia.

The Foundation is our country's only 100% community owned and funded primary welfare agency. It has no Government funding or support what so ever.

This is achieved by building philanthropic partnerships and the development of businesses ventures and activities to enable the Foundation to be completely self-funded by the year 2010.

All profits generated go DIRECTLY to our Start A Fresh project where we provide Crisis Accommodation, Training and Education, Therapeutic Interventions and Affordable Housing.



*TRAC Consulting and The Solution Network Australia have forged a strategic partnership whereby TRAC Consulting will be the licensed delivery agent for ALL Great Corporate Race events through to 2010. TRAC Consulting will channel proceeds from each event back into the SNA Foundations Youth Charities.*

## Helping Children in Need

In this teambuilding experience your team will learn to:

- Communicate with clarity and congruity
- Enhance and enrich their problem solving and creative thinking skills
- Discover and embrace individual and collective strengths
- Bond as a team
- Experience the pride of a heartfelt contribution

First, you and your team mates will recover bike parts through different team building activities that enhance and promote a cohesive team effort. Then, each person will find other team-members and piece together the parts of the bike that will then complete the endeavour. This process will emphasise that each person is a VITAL component to the successful completion of the TEAM GOAL of ALL involved.

Finally, it is time for the most powerful and rewarding part of the program. The finished product (Bikes) are donated to children in need or from disadvantaged backgrounds. Unbeknownst to the children and your organisations team-members, the children are brought into the reception area as customers (a *great customer service tie in*) to receive their new bikes from the overjoyed team members!



***This program is transformational!***

**TRAC Consulting**



## If you're not in the doghouse now, you will be shortly!

Groups/work teams are separated into dog packs. Each pack overcomes a unique obstacle that will enable them to think and act more as a team. After having this task under their collars, the pack is awarded raw materials to build, paint, and adorn the newly team-designed custom home for its new floppy-eared customers.

Each pack can shop at "Doggie Depot" for wacky (and functional) items to add to their dog palace. In addition, each pack will create a bit of *doggerel* (a poem) for the new occupant. During this part of the activity the team **MUST** work as a complete unit to get the task done on-time. After the whistle blows, the packs trot off to the awards ceremony where they bark out their doggerel and wag their tails for the most creative, liveable, and lovable doghouses.

Once more the act of philanthropy is introduced into the program where each doghouse is donated to a non-profit charity such as: The Humane Society, RSPCA, or another canine organisation. The houses can be sold by the Not For Profit organisation to ensure the new family pet has a home to go to!

Another option is to auction the doghouses off and have the proceeds benefit a charity such as the Habitat for Humanity. As with all Community Benefit programs, the choice of the charity and what is done with the finished products is customised to support the desires of the client.



***A program full of Team Work, Creativity and FUN!***

## The Corporate OLYMPICS

The TRAC Corporate Olympics event can be run as a ½ day or full day team building and business development workshop. We integrate the use of many of the learning / training kits and individual learning aids that TRAC Consulting has in its portfolio of Experiential Learning tools.

(Visit our website at for a snap shot of the available resources).  
[http://www.tracc.com.au/resources/Product\\_Profile/The\\_Leadership\\_Kit/P1/](http://www.tracc.com.au/resources/Product_Profile/The_Leadership_Kit/P1/)

The events are structured to be *challenging, extremely engaging and FUN, yet with minimum risk or physical exertion.*

These activity-based teams skills initiatives are all about the team working collaboratively together to maximise their results, identifying and utilising the different talents held by team members and matching that talent to TASK. Although the essence is placed on *participation and having FUN*, learning outcomes are generally built around *team dynamics, leadership, problem solving, strategic planning, project and risk management and effective communications!*

Basically, we set up the course and centrally facilitate and debrief the events – ensuring smooth rotation between activities (proper safety briefings) and scoring for the individual teams is collated correctly: We can also use your facilitators or use volunteer (employees) from the participating organisation to assist with the running of the events if any have injury or health concerns.

The events are designed to energise and then maximize the HUMAN POTENTIAL of your organisations work teams. Set in a competitive context, the teams performance is measured against pre-determined criteria (where possible aligning with your conference or workshop objectives) and the intra - organisational competitive spirit created just by participating in these FUN activities.



**Variety and Diversity are the KEYS to a FUN filled day!**

**TRAC Consulting**



## Our Vision

“Through the process of experiential learning to help individuals and organisations **MAXIMISE** their **HUMAN POTENTIAL** through change and measurable performance improvement in a safe, yet challenging environment”.

## Our Approach

TRAC’s training and professional development programs are renowned for delivering positive and lasting outcomes. Generally our **experiential delivery methods** have a **PROFOUND** impact on participant’s lives both personally and professionally. Not only do trainees achieve new skills and confidence in their ability to do the job as a result of attending our workshops, the balancing influences from TRAC’s programs provide for **MORE** harmonious relationships, improved communications across all sectors, enhanced time management skills, a deeper appreciation of **SELF** and **OTHERS** contributions to their life and their alignment of personal and professional **VISIONS**.

## Our Questions?

- Do you and your team practice “corporate social responsibility” or is it just a warm fuzzy thing that you talk about?
- What motivates the Individuals within your organisation to stretch to **NEW** levels of performance?
- What can be done to improve the quality of the workplace communications and team effectiveness in your organisation?
- How can the actioning of organisational Beliefs and Values expand your potential as a team?

Powered by experiential based (learning-by-doing) activities; TRAC Consulting addresses such questions, we instill participants with **NEW** levels of confidence and enthusiasm, providing lessons and realisations critical to their success in the classroom, the workplace, and in life.

TRAC Consulting offers a wide range of programs, such as these two Community Benefit programs right through to adventure-based activities conducted both indoors and out, domestically and abroad.

As with all TRAC Consulting experiences, a percentage of each program will be donated by TRAC Consulting to the “*KIDS with Cancer Foundation*” our corporate beneficiary, or if preferred a charity that your organisation chooses to support.



Challenge TRAC Consulting to make your next conference experience anything and everything that you could imagine it to be! All Community Benefit programs are generally of 4 - 6 hours duration. However one and two day programs can be tailored to meet your specific conference needs. Investment does not include TRAC Consulting's travel and lodging expenses.

## *Investment Schedules...*

### **BIKES FOR TYKES**

Cost: \$275 per person

*(This includes the cost of the push bikes, tools and event facilitation)*

Minimum participants : 15 - 20

Location : Just about wherever you are or want to be

### **THE DOGHOUSE BLUES**

Cost:\$225 per person

*(this includes the cost of ALL construction materials and tool kits)*

Minimum participants : 15

Location: Just about wherever you are or want to be

## *The investment required to facilitate*

### **THE GREAT CORPORATE RACE**

Typically teams consist of four persons

Less than 20 employees - FULL DAY EVENT is \$2,000.00 per team

Corporate Events for larger businesses is \$2,500.00 per team

*Half day and TWO day events are POA*

### **THE CORPORATE OLYMPICS**

The half day event and workshop investment (small groups) is \$2,640.00

Full day Team Building workshop (small groups – under 20 PAX) \$4,400.00

*Larger Groups & Conferences are POA*

Additional TRAC Facilitators to manage events are costed at \$440.00 each per day of the event.

*All prices are inclusive of GST and subject to change. For all prices, products and offers, TRAC Consulting Pty Ltd reserves the right to make adjustments due to event discontinuation, errors in advertisements and other extenuating circumstances.*

**TRAC Consulting**



## Client Testimonials



“Mark and Jeanette’s experiential delivery style was really suited to our organisational culture allowing staff to learn and maintain interest in a fun and action orientated learning environment. The training plan recommended by TRAC Consulting assisted us in winning the National Australian Hotels Association (AHA) *“Best Training Initiative”* Award in 2005.”

**Gareth Dunne, Operations Manager**



In terms of being competitive in the market, TRAC keeps a focus on being aware of new product and resources and utilises technology to their advantage. This can be seen in their support programs, business mentoring and training online courses. The information that you provided to program participants is relevant and has application across all facets of their business operations, particularly in the areas of service delivery and improved customer relationships.”

**Bob McAlister, Chief Executive Officer**



“The quality of the resources provided by TRAC Consulting has been outstanding. Easy to read, follow and apply as was our mandate to your organisation. The information contained within each is relevant, aligns with our learning objectives and is structured in a way that allows great flexibility with delivery. This is very important to us, given the variety of services provided by our organisation and the flexibility we require with staff rostering.”

**Kym Nunan, Human Resources Manager**

TRAC Consulting has a significant number of full testimonials and client endorsements on its website. Follow the link below to access the TRAC website.

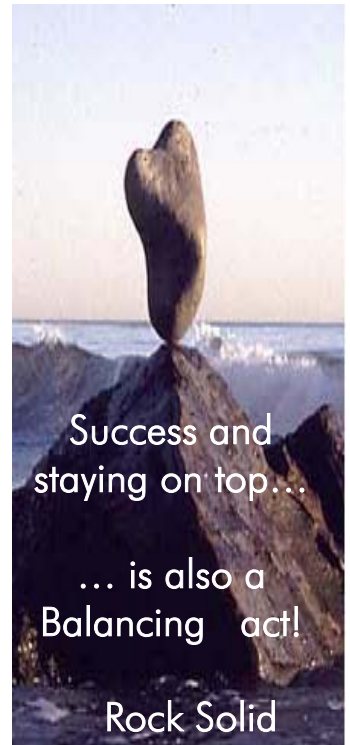
<http://www.tracc.com.au/Testimonials.php>

## Teams Development - Conferencing with a difference!



To stand out from the pack... the key characteristics of HIGH PERFORMANCE teams are:

- EFFECTIVE LEADERSHIP
- PROCESS IMPROVEMENT
- STRONG RELATIONSHIPS
- RESULTS DRIVEN
- COMMON GOAL / VISION / PURPOSE



TRAC's Community Benefit Programs unlock your teams potential whilst incorporating a philanthropic approach to community development.

These experiential learning and conferencing initiatives are specifically designed to improve the balance between effective leadership, workplace relationships, process outcomes and organisational results. In essence the pillars of effective "team dynamics and team performance".

Realising true life experiences and the emotional attachment of assisting those in need, TRAC's Community Development programs stimulate all the senses by engaging participants, physically, mentally, intellectually and emotionally. The impact of these programs is lasting because the experience is real. The recipients of your teams' great deeds are real and the value of your teams efforts are obvious, instantly rewarded by a heart felt thanks. TRAC's life changing events include:

- Bykes for Tykes
- The DOG HOUSE Blues
- The Great Corporate RACE
- The Corporate Olympics

TRAC Consulting Pty Ltd  
PO Box 1627, Caloundra QLD 4551  
Phone: 07 5439 7999 Fax: 07 5439 7977 Mobile: 0421 688 877  
Website: [www.tracc.com.au](http://www.tracc.com.au) Email: [admin@tracc.com.au](mailto:admin@tracc.com.au)

**TRAC Consulting**

